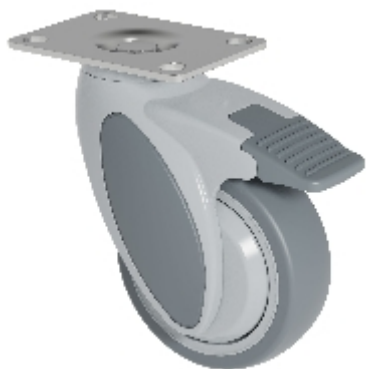




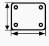
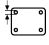
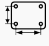




Swivel castor with total brake mounted behind:

KSF2-41C-P95 (VIVAX 2.0)



Technical data

Diameter		100 mm
Wheel width		32 mm
Height		142,5 mm
Offset		46 mm
Top plate dimensions		95x70 mm
Top plate hole diameter		8,5 mm
Dist. between holes		75x50/72x52 mm
Load capacity		100 kg
Weight		600 g

Technical description

plastic castor

fork made of high-strength impact-resistant nylon

swivel fork head with sealed deep groove ball bearing



Wheel

TPE tread (Shore A 87)

polypropylene wheel body

thread guard

ball bearing

non-oiling

on request further variants available