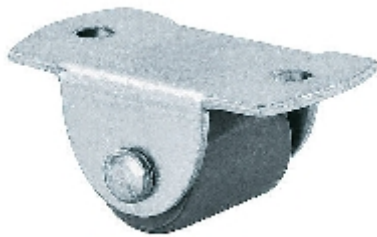





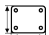
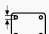
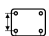


Fixed castor:

156a 00G016g ZPS

On request



## Technical data

Diameter		16 mm
Tread width		19 mm
Height		19,5 mm
Top plate dimensions		42x23 mm
Top plate hole diameter		4,3 mm
Dist. between holes		28,5 mm
Load capacity		20 kg
Weight		22 g

## Technical description

sheet steel housing

zinc passivated



## Wheel

polyamide grey

plain bearing