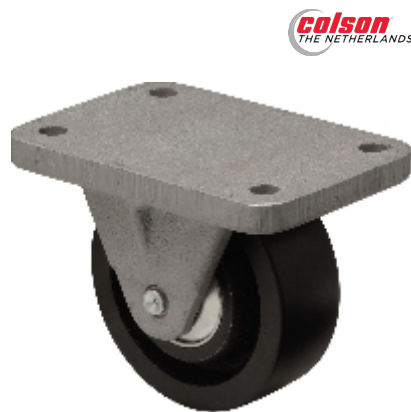



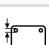



Fixed castor:

FCCN 0803 6102



Technical data

Diameter		80 mm
Wheel width		30 mm
Hub length		36 mm
Height		85 mm
Top plate dimensions		110 x 75 mm
Top plate hole diameter		9 mm
Dist. between holes		85 x 50 mm
Load capacity		200 kg
Weight		1.5 kg

Technical description

Rigid fork out of cast iron GG 20



Wheel

Cast iron wheel with two deep groove ball bearings